



School Planning Update

June 8, 2020



At Bennett Day School, our mission is to provide a collaborative culture that nurtures our innate sense of inquiry and curiosity. We are committed to advancing creativity, innovation, and the development of lifelong learners and leaders.





“If you are **neutral** in situations of **injustice**,
You have **chosen** the side of the **oppressor**.”

- *Desmond Tutu, Nobel Peace Prize Laureate*

Topics

1. Diversity, Equity, & Inclusion
2. Return to Campus Task Force and Plans
3. Community Engagement and Program Task Forces

Community Health Return to Campus Task Force

CHRT-C Task Force

Purpose:

- To understand and interpret local-, state- and national-level health and safety requirements for re-opening campus and to determine how requirements apply to Bennett and our facilities.
- To set the health and safety parameters in which program decisions are made.

Members:

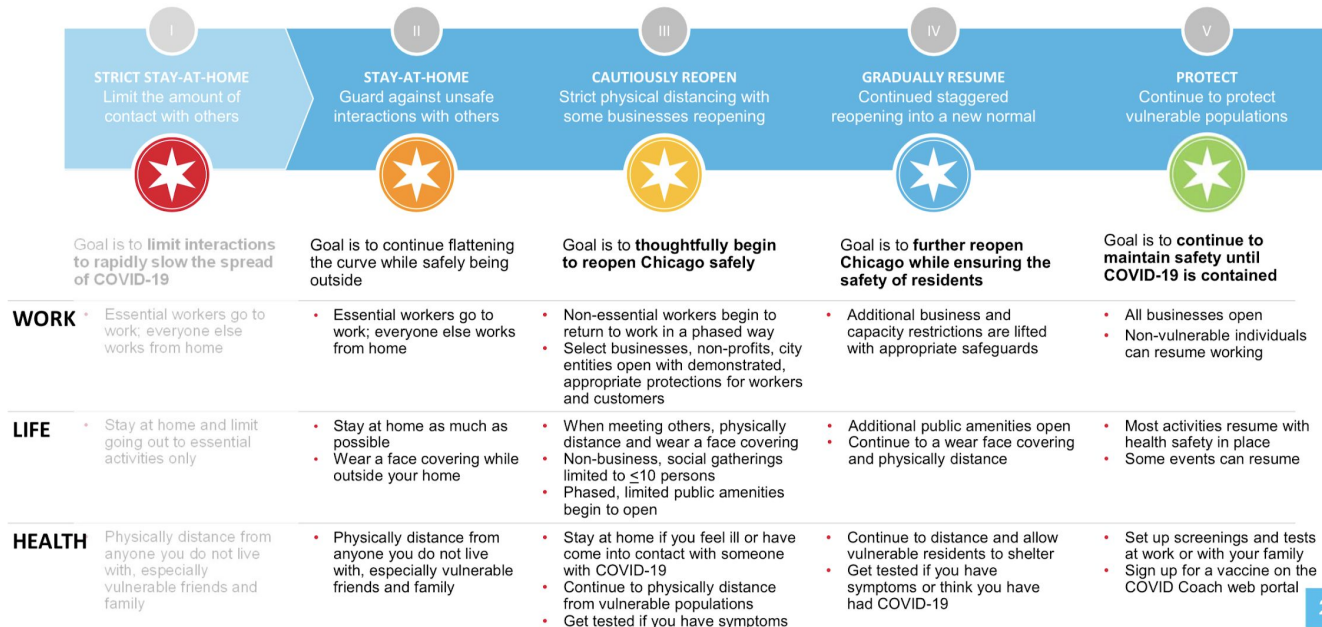
Bennett Administration: Cameron Smith, Kate Cicchelli, Kei Milbrook, Cally Vevers, Kristin Lewicki (nurse), Sarah Skvara, Jerry Nardella
DEI Task Force Representative: TBA

Additional Support Team:

- Dr. Liza Pilch, formerly of the CDC
- Dr. Ari Levy, national return to work advisor

Return to Campus Plans

★ PROTECTING CHICAGO



2

We are now in Phase 3, with the City and State.

Child care programs are starting to re-open with limited services in Phase 3.

Schools expect to be back on-campus in Phase 4.

As we gain clarity, we will have more to share here.

Our Campus will be at an Advantage to meet school capacity requirements and CDC guidelines

All of our Students Would be Able to Attend Bennett When Schools are Open

We recognize we are privileged and fortunate, for many reasons, having recently expanded our campus from 35,000 to 50,000 SF.

The theoretical, legal capacity of our campus is a multiple, well in excess, of current enrollment.

Currently, restaurants, businesses, and schools are expecting to be limited to 50% capacity.

Nearing 300 students, we would not expect *alternate* school days or weeks, like most schools per current expectations (still TBD).

Diversity, Equity, & Inclusion School Commitment

Our Commitment & Action

- Partnering with experts in issues of diversity, race, trauma, and curriculum, to develop a strategic plan of action to address these issues.
- Creating both formal and informal experiences to engage in equity work.
- Developing plans to ensure that all of our structures, be they curricular, operations, enrollment, or finance, embed within them an equity lens.
- Funding and resources allocated to these initiatives and delivery of these commitments.

Supporting ourselves and our children

An Evening and Conversation with Dr. Nneka Onyezia

Purpose: an initial candid conversation with Dr. Onyezia for African American Families and Families of Color to engage in dialogue regarding recent events surrounding police brutality and racial injustice in the African American Community and Communities of Color.

Evening Parent Facilitators: Villare Stewart & Aaliyah Batie

Our hope is that you embrace this important evening to engage in thoughtful and transparent conversation regarding the concerns and impact that this crisis is having on our families. Traditionally, the topic of racial injustice and generational trauma has been a very complex and sensitive conversation for many. However, in recognizing that need, BDS is graciously providing an avenue that will allow our communities to have a comfortable space to freely express our myriad of feelings in light of the recent events.

Family Action Network

FAN events create common ground and provide the latest insights on education, psychology, social change, relationships, and well-being.

Upcoming FAN Webinars

“White Fragility: A FAN Webinar with Robin DiAngelo.”

Robin DiAngelo, Ph.D., Friday, June 12, 7:00-8:00 PM. Dr. DiAngelo will be interviewed by Marcus Campbell, Ed.D., Assistant Superintendent/Principal at ETHS. Questions may be submitted in advance via the registration page. Dr. DiAngelo will not take live Q&A, nor will chat be open.

[Register for the White Fragility Webinar Here](#)

“Preparing Our Kids to Thrive in an Uncertain and Rapidly Changing World: A FAN Webinar with Madeline Levine.”

Madeline Levine, Ph.D., Monday, June 15, 7:00-8:00 PM. Dr. Levine will do a 30-minute presentation (no PowerPoint) followed by a 10-minute conversation with Lonnie Stonitsch, followed by attendee Q&A. Chat will be open. Questions taken via the registration page.

[Register for the Madeline Levine Webinar Here](#)

Diversity, Equity, and Inclusion Task Force

DEI Task Force

Purpose: Originally the National Association of Independent Schools (NAIS) AIM Committee working to bring the NAIS Assessment of Inclusivity and Multiculturalism to Bennett. Scope of work now includes:

- Tasked with vetting outside experts to consult with our community to ensure DEI work is embedded in all aspects of program and policies
 - Programming/Curriculum
 - PD
 - Family communication
 - Policies/Assessment of policies
 - Development of Affinity groups
- Provide avenues for learning to happen in our classrooms, our communities and our homes
- Provide support to committees and task forces across the school community to ensure consistency and adherence to our DEI vision

Current Members: Yvonne Villafuerte, Brittney Washington, Jose Aguayo, Ayesha Sumbal, Angie Jaeger, Kei Milbrook, Sarah Skvara, Kate Cicchelli

Additional Support Team:

- Dr. Nneka Onyezia
- Parent/Guardian AIM Representatives

DEI Vision Statement

DEI Vision Statement

Bennett Day School is a community made up of individuals and families who are diverse in race, religion, age, ability, gender, socio-economics, LGBTQIA+, ethnicity, nationality, and culture in addition to others. **Our inclusive school population inspires students, faculty, staff, and families to develop a habit of mind for many points of view and perspectives different from their own.**

Bennett Day School values and embraces the identities of our community members. We foster a sense of belonging and being known for who we are and what we bring. Our curriculum and programming support our community as we develop awareness, respect, and courage in understanding the similarities and differences in themselves, their peers, and the world around them. **This understanding drives our social and civic engagement.**

This vision statement is just that, a vision statement that will require reflection, consideration, and commitment in the years ahead. It was written from feedback and input provided by:

A Roundtable of Parent/Guardians: Angel Velez, Brigid O'Shaughnessy, Ferris Beatie, Julie Dakers, Lucy Greenlee, Lynette Correa-Velez, Ria Pretekin, Thea Nichols, Villare Stewart

Members of the DEI Task Force: Angie Jaeger, Ayesha Sumbal, Brittney Washington, Jose Aguayo, Kei Milbrook, Sarah Skvara, Yvonne Villafuerte.

Community Engagement Task Force

Community Engagement Task Force

Purpose:

- To insure that the decisions made by the Education team, in concert with CHRT-C, are shared with BDS families
- To engage with families on expectations and receipt of feedback

Members:

Bennett Administration: Cameron Smith, Kate Cicchelli, Sam Rud

Family Association Representatives: TBA

DEI Task Force Representatives: TBA

Program Task Force

Program Task Force

Purpose:

- To determine program goals and priorities for in-person and at-home learning possibilities for 2020-21
- To identify how those goals can be implemented within the health/safety parameters set by the CHRT team.
- To build out the social emotions and curricular priorities and program for learning across the grades in 2020-21

Members:

- Cohort Leads: Amber Powell, Sara Violante, Shay Phee, Jen Newberry, Peter Granquist
- Additional Teaching Faculty: Kyra Termini, Molly Simmons, Ayesha Sumbal, Angie Jaeger
- Administrative Faculty: Meg Fitzgerald, Jackie Miller, Marty Moran, Kate Cicchelli
- DEI Task Force Representative: TBA

Additional Support Team:

- Dr. Caroline Adelman
- Dr. Nneka Onyezia

“We have no interest in returning to a ‘new normal’.
Rather, we seek a new way forward that will offer
more hope and promise than ever before.”

- *Craig Robinson, President, College Possible*



bennett
day school

Appendix



Distance Learning / At-Home Activities

Program

- Daily live Morning Meetings
- Daily live Instructional Time
- Daily content with Specialists
- Daily academic content in math and literacy
- Regular Student Live One-on-Ones Meetings
- Virtual All School Meetings every Friday

Auxiliary

- Study Hall live: Mon-Fri, 11:30am-1:30 pm
- Daily live Engagement with Specialists
- Virtual Spring Break Camp
- Bennett Day Camp this Summer

Bennett Labs

- Bennett Live: Monday-Friday
 - Creative Play with Mrs. Cunningham at 11:00 am for 3 to 6 year olds
 - Exploring with Mr Reynolds at 2:00 pm for 7 to 12 year olds

Distance Learning / At-Home Activities

Suggested Schedules:

- [PK Schedule](#)
- [JK Schedule](#)
- [SK-2nd Schedule](#)
- [3-5 Schedule](#)



RESTORE ILLINOIS

A Public Health Approach To Safely Reopen Our State

Phase 1 Rapid Spread	Phase 2 Flattening	Phase 3 Recovery	Phase 4 Revitalization	Phase 5 Illinois Restored
<p>Strict stay at home and social distancing guidelines are put in place, and only essential businesses remain open.</p> <p>Every region has experienced this phase once already and could return to it if mitigation efforts are unsuccessful.</p>	<p>Non-essential retail stores reopen for curb-side pickup and delivery.</p> <p>Illinoisans are directed to wear a face covering when outside the home and can begin enjoying additional outdoor activities like golf, boating & fishing while practicing social distancing.</p>	<p>Manufacturing, offices, retail, barbershops and salons can reopen to the public with capacity and other limits and safety precautions.</p> <p>Gatherings of 10 people or fewer are allowed.</p> <p>Face coverings and social distancing are the norm.</p>	<p>Gatherings of 50 people or fewer are allowed, restaurants and bars reopen, travel resumes, child care and schools reopen under guidance from the Illinois Department of Public Health.</p> <p>Face coverings and social distancing are the norm.</p>	<p>The economy fully reopens with safety precautions continuing.</p> <p>Conventions, festivals and large events are permitted, and all businesses, schools and places of recreation can open with new safety guidance and procedures.</p>

We are now in Phase 3 at the State level. We are also beholden to the City phases shared earlier.

Schools would be fully back on-campus in Phase 4. A State order was just issued 6/4 to permit limited school summer programs too under Phase 3 (still subject to other City requirements).

As we gain clarity, we will have more to share here.

Experts Supporting Our Bennett Community



Dr. Liza Pilch



Dr. Ari Levy



Dr. Caroline Adelman



Dr. Nneka E. Onyezia

Plus: External DEI Experts
Currently Being Sought and
Evaluated by our DEI Task Force

Factors	Scenario Considerations			
Government	Restore Illinois Phase	Illinois Department of Public Health Requirements	Potential City of Chicago or Cook County Requirements	Bennett Community Health Response Team Expert Input
Program	Project-Based Learning	Academic Rigor and Progress Documented Across Domains	Promotion of Skills Across Grade Level	Assessment and Documentation
Emotional Wellness	Programming for Students	Programming for Parents/Guardians	Programming for Faculty	Family Association Committees and Programming for All
Technology	Student access and instruction for all	Education, Resources, and Training for our Families	Education, Resources, and Training for our Faculty	Accommodations/Access to program for students at home during in-school learning
School Schedule & Calendar	Adapt to transitions between Restore Illinois and Govt. Mandated Phases	Adapt to demands on students, faculty, and parents/guardians; reflective of best practice and responsive to all	In-home schedule may be different from the in-person schedule	Potential modified school hours/programming
Facilities Management	Adhere to occupancy mandates regarding; limit access to campus	Flow of traffic in and out of the building; pick up and drop off	Regularly scheduled hourly, daily, weekly cleanings and deep cleanings	Availability/requirement for PPE for students, faculty, and admin
Health & Safety Protocols	Class size, student to teacher ratios, and contained group protocols, as mandated by government bodies and best practices for health and safety	Potential daily temperature checks for faculty and students with requirements of families at home, protocols at school	Potential mandatory 14 calendar day absences for exposed or presumptive positive students/faculty/families	Availability/requirement for PPE for students, faculty, and admin

Example Scenarios

(these are from our research and are **ONLY** illustrations, they do not reflect our plans to come)

Scenario 1: Based on Denmark & Taiwan Protocols

- Restore Illinois Phase 4
- Full building capacity
- 10-12:1 Student to teacher ratio
- Contained groups
- Staggered Start & End School Day 8:00am-4:00pm

Scenario 2: Based on Germany & Taiwan Protocols

- Restore Illinois Phase 4
- Limited building capacity
- 12:1 Student to teacher ratio
- Contained groups: alternate days/times of day in the building, but only if required.
- School day start and end times vary

Scenario 3: In-Home Local/National/International Models

- Restore Illinois Phases 2-4

SCHOOL DAY PROTOCOLS
SCHOOL DAY: Min. 4.5 hours of synchronous/asynchronous learning
GROUP SIZES: Combinations of one-on-one, small group, and contained student group sessions in academic areas
GROUP DYNAMICS: Contained group rotations in 3-4 week clusters
SPECIALS: Synchronous/asynchronous learning with specialist teachers
SNACK AND LUNCH: Faculty supervision for snack/lunch groups
SOCIAL GROUPS: Ongoing live social groups by age and interest
STUDY GROUPS: Ongoing live study groups by content area and grade

“If you are coming to help me, you are wasting your time.
But if you are coming because your liberation is bound up with mine,
then let us work together.”

- *Lila Watson, speech at the United Nations*



bennett
day school